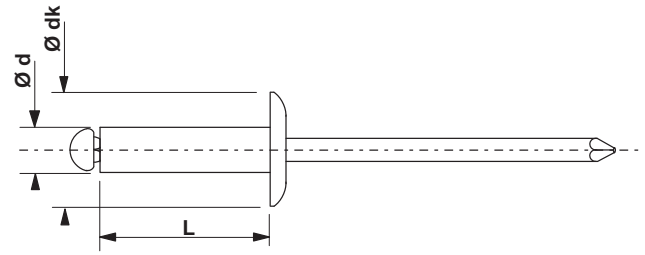


INOX A2 TRS

TÊTE RONDE STANDARD / DOMED HEAD

CONFORME À LA NORME / STANDARD COMPLIANT
NF EN ISO 15983



INOX A2
STAINLESS ST. A2

INOX A2
STAINLESS ST. A2

| Ø | L | dk | | | | | BOÎTE CARTON CARDBOARD BOX | | BOÎTE PLASTIQUE PLASTIC BOX PAR LOT DE 5 / PACK OF 5 | | BLISTER BLISTER PAR LOT DE 6 / PACK OF 6 | |
|-----|----|-----|-------------|-----|------|------|--------------------------------------|-------------|---|------------|---|---------------|
| | | | | | | | N | N | QTE. | REF. | QTE. | REF. |
| mm | mm | mm | mm | mm | N | N | QTE. | REF. | QTE. | REF. | QTE. | REF. |
| 2,4 | 6 | 5 | 2,0 - 4,0 | 2,6 | 1200 | 1000 | 500 | 105 124 061 | 400 | 105124061P | - | - |
| | 8 | | 1,0 - 3,0 | | | | 500 | 105 130 061 | - | - | | |
| | 10 | | 3,0 - 5,0 | | | | 500 | 105 130 081 | - | - | | |
| | 12 | | 5,0 - 7,0 | | | | 500 | 105 130 101 | - | - | | |
| | 14 | | 7,0 - 9,0 | | | | 500 | 105 130 121 | - | - | | |
| 3 | 6 | 6 | 1,0 - 3,0 | 3,2 | 2700 | 2300 | 500 | 105 132 061 | - | - | - | - |
| | 8 | | 3,0 - 5,0 | | | | 400 | 105132081P | - | - | | |
| | 10 | | 5,0 - 7,0 | | | | 500 | 105 132 101 | - | - | | |
| | 12 | | 7,0 - 9,0 | | | | 500 | 105 132 121 | - | - | | |
| | 14 | | 9,0 - 11,0 | | | | 500 | 105 132 141 | - | - | | |
| 3,2 | 6 | 6,5 | 1,0 - 3,0 | 3,4 | 3300 | 2800 | 500 | 105 132 161 | - | - | - | - |
| | 8 | | 3,0 - 5,0 | | | | 500 | 105 132 181 | - | - | | |
| | 10 | | 5,0 - 7,0 | | | | 500 | 105 140 061 | - | - | | |
| | 12 | | 7,0 - 9,0 | | | | 500 | 105 140 081 | 300 | 105140081P | 50 | 105 140 084 A |
| | 14 | | 9,0 - 11,0 | | | | 500 | 105 140 101 | 300 | 105140101P | 50 | 105 140 104 A |
| 4 | 13 | 8 | 6,0 - 9,0 | 4,2 | 5000 | 4100 | 500 | 105 140 131 | 200 | 105140131P | 50 | 105 140 134 A |
| | 16 | | 9,0 - 12,0 | | | | 500 | 105 140 161 | 200 | 105140161P | 50 | 105 140 164 A |
| | 18 | | 12,0 - 14,0 | | | | 500 | 105 140 181 | - | - | - | - |
| | 20 | | 14,0 - 16,0 | | | | 500 | 105 140 201 | - | - | - | - |
| | 22 | | 16,0 - 18,0 | | | | 500 | 105 140 221 | - | - | - | - |
| 4,8 | 6 | 9,5 | 0,5 - 1,5 | 5,0 | 6800 | 5000 | 250 | 105 148 061 | - | - | - | - |
| | 8 | | 1,0 - 3,0 | | | | 250 | 105 148 081 | - | - | - | - |
| | 10 | | 3,0 - 5,0 | | | | 250 | 105 148 101 | 200 | 105148101P | 50 | 105 148 104 A |
| | 12 | | 5,0 - 7,0 | | | | 250 | 105 148 121 | 200 | 105148121P | 50 | 105 148 124 A |
| | 14 | | 7,0 - 9,0 | | | | 250 | 105 148 141 | 200 | 105148141P | 50 | 105 148 144 A |
| | 16 | | 9,0 - 11,0 | | | | 250 | 105 148 161 | 150 | 105148161P | 50 | 105 148 164 A |
| | 18 | | 11,0 - 13,0 | | | | 250 | 105 148 181 | - | - | - | - |
| | 20 | | 13,0 - 15,0 | | | | 250 | 105 148 201 | - | - | - | - |
| | 23 | | 15,0 - 18,0 | | | | 250 | 105 148 231 | - | - | - | - |
| | 26 | | 18,0 - 21,0 | | | | 250 | 105 148 261 | - | - | - | - |
| 6,4 | 12 | 12 | 4,0 - 6,0 | 6,6 | 9000 | 7000 | 250 | 105 164 121 | - | - | - | - |
| | 14 | | 6,0 - 8,0 | | | | 250 | 105 164 141 | - | - | - | - |
| | 18 | | 10,0 - 12,0 | | | | 250 | 105 164 181 | - | - | - | - |
| | 20 | | 12,0 - 14,0 | | | | 250 | 105 164 201 | - | - | - | - |
| | 25 | | 14,0 - 19,0 | | | | 250 | 105 164 251 | - | - | - | - |

SUR DEMANDE
UPON REQUEST

Ø 5 • Autres longueurs • Rivets couleurs • Inox A2/Acier • TR • Rivets multi-serrage GOMULTI Inox Ø 3,2 - 4 - 4,8 • Rivets Éclatés GOSTAR Inox Ø 4 - 4,8
Ø 5 • Other lengths • Coloured rivets • Stainless st. A2/Steel • Reduced head • Stainless steel Multi-grip Rivets Ø 3,2 - 4 - 4,8 • Stainless steel Peel Rivets Ø 4 - 4,8